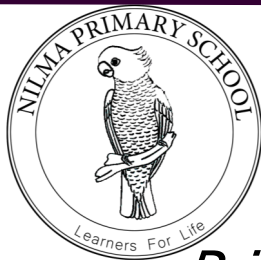


Bloomfield Road,
Nilma 3821
Telephone: (03)56232963
Email: nilma.ps@edumail.vic.gov.au
Website: www.nilmaps.vic.edu.au



NILMA PRIMARY SCHOOL

Principal Notes

NEWSLETTER

Thursday 3rd March 2016
Issue 06-2016

Principal

Ms Annette Sutherland

Business Manager

Mrs Rachel Hammond

Office Administrator

Belinda Smythe

School Council

President

Mrs Natalie Axford

NEWSLETTER CONTENTS

Principal Notes	..1
Student Learning	..2
School Organisation	..4
Calendar	...12

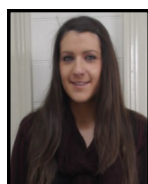
MATHEMATICS AND SCIENCE SPECIALIST TRAINING

As you may or may not be aware, Nilma Primary School was fortunate to receive funding for 2016 for a Mathematics and Science Specialist program. We are really excited about this State-wide Initiative to enhance student learning. Over the next two weeks both Monica Berkelmans and Kathryn Evans will be in Melbourne receiving training.

Miss O'Brien and Ms Matarczyk will be teaching the Red and Green home-groups.

We are looking forward to further develop our Mathematics and Science programs with the new research and Training Miss Berkelmans and Mrs Evans will return to Nilma with.

Students have met Ms O'Brien before and we welcome her to Nilma for the two week period. If you have any questions, please don't hesitate to see Annette.



FOUNDATION STUDENTS

From next week, beginning Monday 7th March, Foundation students will attend Nilma for a full week!

SCHOOL UNIFORMS FOR 2016 NEW JACKETS/JUMPERS @ NILMA

The new jumpers/jackets that are now part of the Nilma uniform are available for purchase from Hip Pocket Workwear in Warragul. We contacted them today and they have told us that they are in stock!

The hoodie jumper are \$34.85 each and the hoodie jacket with zipper is \$30.65.

Students that still have the original school jumper are still able to wear them as part of their uniform. We would like to thank the school community for their feedback and input into this decision.

HOT CROSS BUN DRIVE



Thank you to those that have already returned their orders and payments for the Hot Cross Bun Drive. Orders and payment are due in

on Tuesday 8th March, late orders cannot be accepted. Delivery for the Hot Cross Buns will be on Tuesday 22nd March from school.

WARRAGUL SHOW

Have you seen our giant pumpkins? They have been growing bigger and bigger since last year, and today it was time to harvest them ready for entry at the Warragul Show for judging on Friday 4th March. Nilma have entered in 7 categories all together this year, if you are heading to the show this weekend make sure you stop by and see our entries! Good luck Nilma! The Red Homegroup are pictured with one of our pumpkins before they were picked this morning.



SPORTING SCHOOLS

Our Sporting Schools program commences on Tuesday 8th March. Please return the form, which were sent home during the week by, tomorrow, Friday 4th March. See page 5 for more information.

APOLOGY

We apologise for the lateness of last weeks newsletter, we have been experiencing difficulties with our printers!

STUDENT LEARNING @ NILMA



R.E.A.L STUDENTS@NILMA

Learner of the Week Recognitions

Homegroup 1/F Red

Lewis Devlin

For always showing the five L's of learning. What a great effort, well done.

Homegroup 2/1 Green

Harrison Jones

For always demonstrating what it is to be a REAL Visible Learner. You are a great role model for your classmates!

Homegroup 4/3 Blue

Jasmine Cane

for demonstrating such a responsible attitude to all areas of your learning and always giving your best effort. Your positive attitude sets a great example for your fellow students. A "REAL" Visible Learner. Well done Jasmine!

Homegroup 6/5/4 Yellow

Aiden Olsson

You are such a mature, responsible and caring member of our homegroup. You always work towards being the best REAL learner possible.

L.A.U.G.H Program

Learning Activities Under Guidance of Home
NIGHTLY READING

25 Nights

Teylah Lott

Jasmine Cane

Sheree Casey Wilson

Oliver Turner

Cohen Cogo

Nick Addison

Amelia Scanlon

PLAYGROUND AWARDS

Winners



- Dylan B
- Alex
- Jesse Matthews
- Mitchell G



Happy Birthday

Emma Brown

HOMEGROUP HAPPENINGS!



This week Ruby Red Home Group have been practising their Journal Writing

Home Group
- 1/F -
Ruby Red

Writing

I went to my nana's house and played.

By Alex Chesterfield.

I went shopping at Woolworths and I got Shop Kids.

By Leaight Archer.

On Sunday I went to Emma's birthday and I made a bow.

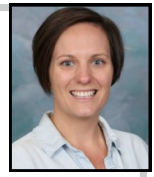
By Mia Wood.

I was at my house and found an egg.

By Blake Stone.



Student in the Green Gem Home Group have been practising writing with *Sizzling Starts*.



Home Group
- 2/1 -
Emerald Green

Wow!!! Thomas's party is fun. We played lots of games and the cake was blue. By Cohen Cogo.

I got an awesome racing car. By Thomas Buckler.

Wow! This party is awesome. I went to my cousin Mia's house. By Elizabeth Dalrymple.

Ouch! I hurt my ribs. I hurt it on the table. By Ty Kindermann.

Today I bought a new game that is called Adventure Time and I bought it at EB Games. When I sat and started the Play Station 3 up the Adventure music came on. By Jesse Matthews.



Yum Yum Yum Cooking by Piper Bundle

What we made in Kitchen Garden last week;

- Hummus {yum}**
- Greek salad {yum}**
- Lettuce rice cups {yum}**
- Indian flat bread {so yum}**

Home Group
- 4/3 -
Aqua Blue

The ingredients of hummus were;
Chick peas
1 lemon
1 1/3 of water
Olive oil



I worked with my nanna and we made it!!

Kitchen Garden Report Thursday 25 Feb...by Emma Teachers; Mrs. Uren, Mrs. Hodge, Natalie and Mrs. Perry

Kitchen utensils we used; Chef's Knife.
The food we ate; Pizza and Salad of Imagination.

This is the food that was in our Pizza; potato, tomato, oil, rosemary, cheese and then we had to put that on the pizza and cook it.

The people in my group were Olivia, Zavier, Jade and I. When we got the flour Zavier got covered in it! I had so much fun. Then it was time to eat. I liked the pizza, it was good.

By Emma Crook



Narrative Work-in-Progress



Home Group
- 6/5/4 -
Lemon Yellow

Crack! As I walked through the door, I felt so much fear that I had goosebumps and my legs were numb. I stopped when I heard a noise coming from upstairs.

The door suddenly slammed behind me. I wanted to jump out of my skin, and the hair on my neck went static like someone was behind me...

By Riley Kleeven

SCHOOL ORGANISATION

JAPANESE EXCHANGE INFORMATION EVENING

For any families interested in the proposed Japanese Exchange Program for 2016 there will be an information session at Darnum Primary School on Tuesday March 22nd from 7pm.

ESSENTIAL EDUCATION ITEMS

In developing the 2016 Essential Education Items (Subject Contributions), all aspects of the Schools Resource Package from the Department of Education and Training and the needs of the school in providing the necessary extras to provide a quality educational program, has been considered.

The amount for Essential Education Items for 2016 will be \$140.00 per child.

The Excursion Levy for 2016 will be \$50 per child.

The amount for Essential Education Items is used to purchase all books and stationery used by each child in their classrooms for the year. It is also used to cover costs of purchasing materials for Art, English, Music, Mathematics, Technology, Science, and Health and PE, MARC Van and Sports Levies.

Nilma Primary School would appreciate payment for all Essential Education Items and Excursion Levies by the end of first term 2016. The amount of \$190.00 can be paid to the office in cash, cheque, or by bank deposit.

A payment plan can be arranged for those who wish to pay in instalments. Please speak to the office for more information. Thank you to those who have already paid the Essential Educational Items and Excursion Levy. If you have paid by direct deposit please notify the Office of your payment.

LIBRARY & MARC VAN BOOKS

Could students please return any outstanding Library and MARC Van books next week. MARC Van book are to be returned every fortnight, on Marc day to allow students to re-borrow other books. Nilma's library system runs on a weekly basis, with each homegroup borrowing on different days. Students are to return books on their nominated days to re-borrow from the schools library.

MELBOURNE MUSEUM EXCURSION

On Monday 21st March, the whole school will be participating in an excursion to the Melbourne Museum. Students will travel to and from the Museum by bus. Permission forms are attached to the newsletter and are due back by Tuesday 15th March. The cost for this excursion is \$30 per student, if parents have already paid the excursion levy then there is no costs incurred for this excursion. If you have not as yet paid your excursion levy then you will need to pay for this excursion unless you have received a CSEF payment. Please contact the Office for any further information.

ABSENCES AND ATTENDANCE

An important part of your child's school life is regular attendance. We do understand that children often get sick and have family holidays, and while a phone call is appreciated we also require an explanation in writing signed by parents.

CAMP INFORMATION

YEAR 6/5 BALLARAT CAMP

The Year 6/5 Camp will be held at Ballarat on Wednesday 20th until Friday 22nd April 2016. Good news! -The cost of the camp has been reduced as we now only have to take one bus to the camp as there are several children attending the Somers camp from across the cluster. The camp will now cost \$250. All camp payments need to be finalised before attending—full payment due on 14th April 2016. If paying with the camp payment plan, payments are due on Thursdays, for March they are due on the 3rd, 10th 17th and 24th, with the last payment due on Thursday 14th April. Attached to the newsletter are permission and medical forms. More information will be sent home closer to the camp, such as packing/clothing lists and itinerary.

SOMERS CAMP

Three students from Nilma will attend Somers Camp, from Tuesday 12th until Wednesday 20th April 2016. Students attending Somers Camp were given the forms needed for camp earlier this week, these forms and a \$50 deposit are to be returned to school by Friday 4th March. Full payment of this camp is due by Friday 18th April. For any more information please speak to the Office.

IMPORTANT DATES - SCHOOL CAMPS!

Year 4/3 Camp at Mill Valley Ranch - 13th - 14th Oct 2016

SCHOOL ORGANISATION

SPORTING SCHOOLS

Nilma Primary School have been successful in obtaining funding for terms 1 and 2 to start the Sporting Schools program for 2016.

Athletics will be offered as a 3 week program at Nilma beginning Tuesday 8th March, 3.30 pm- 4.30pm. Places are limited to the first 20 students, from all year levels, so get in quick!

We have a coach from Athletics Australia coming along to teach the program.

The program will run on Tuesdays, the 8th, 15th and 22nd March 2016.

Students are only able to participate in the program if parents/guardians have signed the Sporting School Consent section in the Student Permission Booklet that was sent home at the beginning of the term. If you are unsure if you have signed and returned this book then please contact the Office.

Due to the changes in the program and funding we are unable to provide a healthy snack before the beginning the sessions so participants are asked to bring along a piece of fruit to snack to eat before the session starts.

Please fill out and return the form that was sent home on Tuesday 1st March by 9am on Friday 4th March 2016.

Students will need to wear appropriate footwear and bring a drink bottle for the sessions. Hats must also be worn.

For any more information please speak to the Office staff. Participants will be notified on Friday 4th March - in the afternoon.

ICYPOLES AND JUICE BOXES



Students are able to purchase Icyroles and Juice Boxes from the Staffroom at the beginning of recess and lunch. Students may leave their money in the designated class tub for safe keeping and can access this money when purchasing an item.

Icyroles are 50c each and Juice Boxes are \$1.



FUNDRAISING @ NILMA



HOT CROSS BUN DRIVE

Our first fundraiser for 2016 is a Hot Cross Bun Drive with Bakers Delight. Order forms, with full payment, are due back on Tuesday 8th March. Delivery for the orders will be on Tuesday 22nd March. There are 4 varieties to choose from; Traditional, Choc Chip, Mocha and Fruitless, all are \$7.00 for a pack of 6. For extra order forms please contact the Office.



VISION PORTRAITS

Vision Portraits will be at Nilma on Saturday 16th April for a '\$15 Photo Fundraiser'.

Families are now able to book sessions online or with cash at the Office. Photos can be

taken both indoors and outdoors, and includes a 10" X 13" photo and frame.

FUNDRAISER	PROFIT
Drinks/Icyroles	\$470
Hot Cross Buns	\$119
Snax with Attitude	\$278
Mothers Day Stall	\$220
Swap Meet	\$873
Fathers Day Stall	\$137
Tough Mudder	\$1330
School Disco	\$372
Christmas Raffle	\$494

2015 FUNDRAISERS

Last year a number of fundraising ventures were undertaken at Nilma. We are now able to share with you the profit made from each fundraiser. Money raised from the ventures purchased new iPads and Sand Pit Toys, supplied food for the End/Start of Year/Term BBQ's and money was also put towards excursions and incursions. In total, \$4293 was raised by the fundraising team. A 'HUGE THANK YOU' goes to all those that put in the time and effort to run these ventures and to those from the school community who supported them, a great team effort!

We hope that this years fundraisers will also be as successful and profitable for the school and students.

STEPHANIE ALEXANDER KITCHEN GARDEN PROGRAM

Mrs Uren and Mrs Hodge will be coordinating the Stephanie Alexander Kitchen Garden Program. This program will be held every Thursday. During cooking sessions (fortnightly for students in years 3 and 4) students will be making yummy treats such as; salads of the imagination, tarts, tortes, curries, breads, fritters, gnocchi and pastas. In the garden students will be pruning, composting, mulching, planting, creating a worm farm, creating a no dig garden, weeding, fertilising and harvesting.



Below is a roster for this terms program. It would be great if we could have 3 volunteers for every session, you may be able to help for the while day or you may only be able to help for one session.

If you are able to volunteer on any of the dates indicated, please fill out the roster below and return to school. Thank You!

	Group 1 9am - 10am Green Homegroup	Group 2 10am - 11am Red Homegroup	Group 3 11.30 - 1pm Yellow Homegroup	Group 4 1.45pm - 3pm Blue Homegroup
10th March (Cooking)				
17th March				
24th March (Cooking)	Sophie Majcherzak	Sophie Majcherzak		



CHAPLAIN'S CHAT

is it BULLYING?

When someone says or does something *unintentionally* hurtful and they do it once, that's **RUDE.**

When someone says or does something *intentionally* hurtful and they do it once, that's **MEAN.**

When someone says or does something *intentionally* hurtful and they *keep doing it* even when you tell them to stop or show them that you're upset—that's **BULLYING.**

At Nilma we have been discussing 'Is it bullying?' and what it means and to understand the differences between what is 'rude', what is 'mean' and what is 'bullying'.

Students have been working to develop strategies and ideas to understand these terms and their context, to develop knowledge about this topic and what to do in these situations.

We will continue working with students over the next few weeks to extend on the topic and will tailor programs and sessions for each year level.



WGRSSA ATHLETICS DAY

WEST GIPPSLAND RURAL SCHOOL SPORTS ASSOCIATION ATHLETICS DAY

FRIDAY 11TH MARCH 2016

ATHLETICS SPORTS PARKING

It would be appreciated if drivers arriving at the Athletic Sports adhered to the following directions;

- Enter via the entry closest to the bus depot (next to the Regional College pedestrian crossing).
- If dropping off children turn to the left and after dropping children exit at the other end.
- If parking for any length of time follow the instructions of the parking marshals (in orange vests) and turn right onto the large grass area adjacent to the tennis courts. Please note there will be a section through the treed area (marked with bunting) that acts as a laneway to the parking area and must be kept clear at all times.

Please respect the parking marshals who are trying to ensure the safety of the children and the smooth and efficient movement of many vehicles.

PARENT ATTENDANCE AND SUPPORT

The attendance and support of parents, other relatives and friends at the Athletic Sports is certainly appreciated and encouraged by the staff and students. It is wonderful to see and hear so many people supporting the children. It is important to remember that the emphasis at our Athletic Sports is on participation, enjoyment and 'trying your best' rather than on winning. Some events may be run in a different way to competitions you have seen or experienced at other Athletic events. We ask parents to encourage and support all children and teachers in their efforts at the sports.

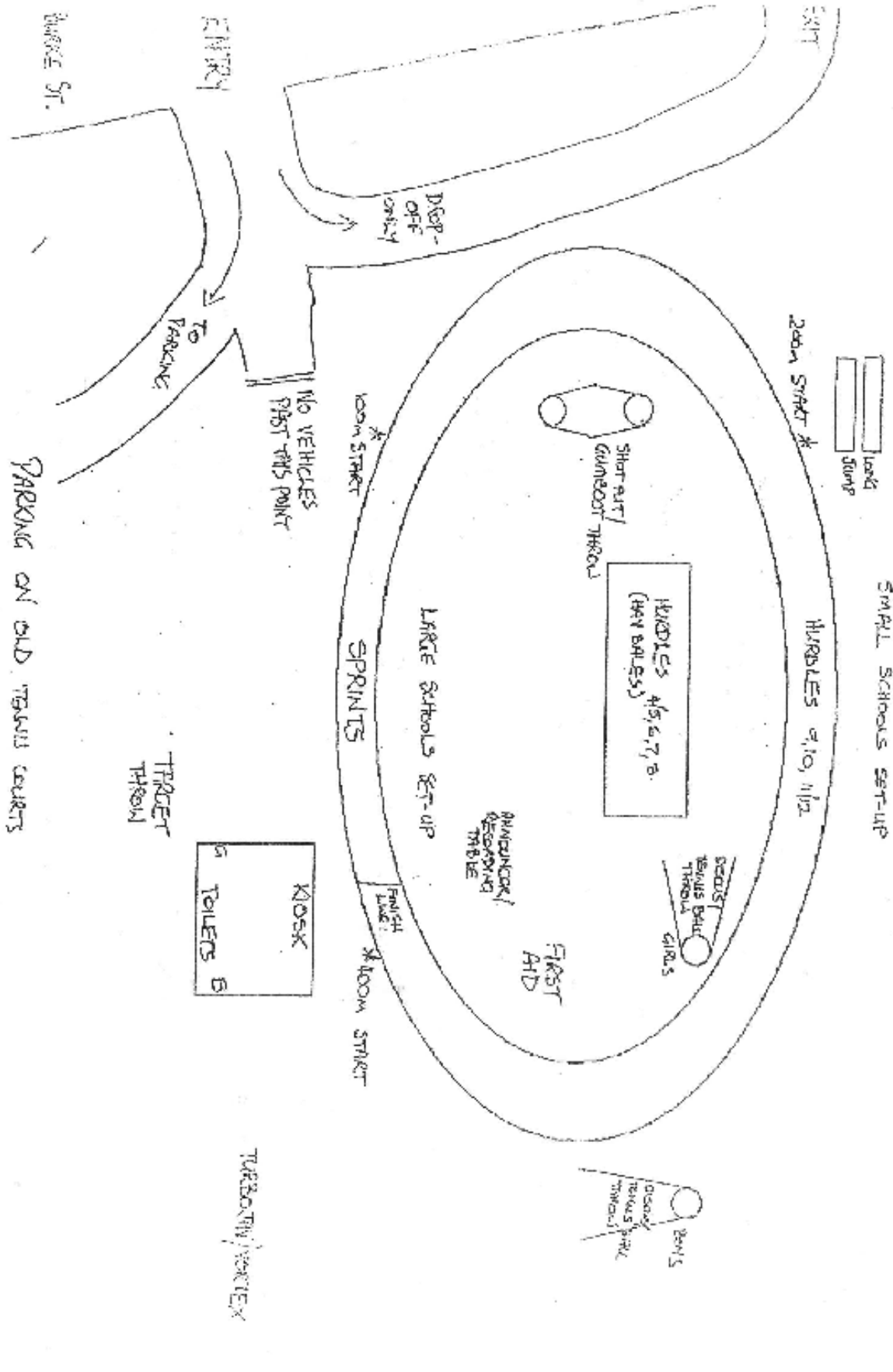
AGE GROUPS

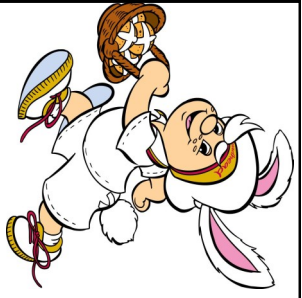
Students are placed in age groups according to their age. This year the ages are taken from the students age as of 1st January 2016. Students will be given a badge as they arrive on Athletics Day, this will have on it their name, school, age group, medical conditions (if any) and photo restrictions (if any).

TIMETABLE

9:15 AM	OFFICIAL WELCOME / CHILDREN ASSEMBLE IN AGE GROUPS						
	FOURS/FIVES	SIXES	SEVENS	EIGHTS	NINES	TENS	ELEVENS/ TWELVES
9:25 AM	DISTANCE RUN (100m)	GUMBOOT THROW	HURDLES (Hay Bales)	STANDING LONG JUMP	TARGET THROW	SPRINT (100m)	DISCUS (750G)
9:45 AM	VORTEX	DISTANCE RUN (100m)	GUMBOOT THROW	HURDLES (Hay Bales)	LONG JUMP	TARGET THROW	SPRINT(100m)
10:05 AM	REST/Toilet Break	VORTEX	DISTANCE RUN (100m)	GUMBOOT THROW	HURDLES	LONG JUMP	TARGET THROW
10:25 AM	SPRINT (50m)	REST/Toilet Break	VORTEX	DISTANCE RUN (200m)	SHOT PUT (2kg)	HURDLES	LONG JUMP
10:45 AM	TARGET THROW	SPRINT (50m)	REST/Toilet Break	VORTEX	DISTANCE RUN (200m)	SHOT PUT (2kg)	HURDLES
11:05 AM	STANDING LONG JUMP	TARGET THROW	SPRINT (50m)	TENNIS BALL	TURBO JAV	DISTANCE RUN (400m)	SHOT PUT (2kg)
11:25 AM	HURDLES (Hay Bales)	STANDING LONG JUMP	TARGET THROW	SPRINT(70m)	DISCUS (500g)	TURBO JAV	DISTANCE RUN (400m)
11:45 AM	GUMBOOT THROW	HURDLES (Hay Bales)	STANDING LONG JUMP	TARGET THROW	SPRINT(70m)	DISCUS (500g)	TURBO JAV
12:05 PM	CHAMPIONSHIP RACE 200m						
12:30 PM	LUNCH						
1:00PM	AFTERNOON EVENTS BEGIN						
	Big Schools	Buln Buln, Darnum Nilma			Small Schools	Ellinbank, Bona Vista, Lardner & Dist. & Ripplebrook	
	ORDER OF EVENTS	1.OBSTACLE	Open, U/58, U/46		1. EGG & SPOON	Gr. 4/5/6, Gr. P/1/2/3	
		2.TUNNELBALL	"		2. POTATO RACE	"	
		3.BOBBALL	"		3. SHUTTLE	"	
		4. EGG & SPOON	"		4. TUNNELBALL	"	
		5. POTATO RACE	"		5. BOBBALL	"	
		6. SHUTTLE	"		6. OBSTACLE	"	

WGRSSA ATHLETICS DAY





Bakers Delight



HOT CROSS BUN ORDER FORM 2016

School/Organisation: _____NILMA PRIMARY _____ Contact Phone Number: _____

Contact Name: _____ Delivery date: 22nd March

Student Name	Class	Traditional Hot Cross Buns Qty (per 6 pack) \$7.00 per 6 pack	Choc Chip Hot Cross Buns Qty (per 6 pack) \$7.00 per 6 pack	Mocha Hot Cross Buns Qty (per 6 pack) \$7.00 per 6 pack	Fruitless Hot Cross Buns Qty (per 6 pack) \$7.00 per 6 pack	Total \$	Paid

COMMUNITY ANNOUNCEMENTS



Do you like to have fun?

Are you someone who can learn new skills?

Want to be part of something awesome?

If you answered yes to any of the above, **WE WANT YOU!!!!!!!**

Come and join the **GULLS HOCKEY CLUB** and be part of something special!

Weekly training with coaches and game day guidance.

Our great teams are here to have fun and would love to welcome you into our hockey family!

Team places currently available in

U8's, U10's, U12's, U17's Women's and Men's teams.

Whether you are a beginner or seasoned player we have a place for you!

For more info, contact Tash at tashwayne@dodo.com or on 0400732615.

SCHOOL COUNCILLOR TRAINING

Syneristiq is offering School Council Governance training in our area on Tuesday 15th March at Neerim South Primary School.

The role of a school councillor is an integral part of the school and its community. The training gives councillors an understanding of the roles and responsibilities of being a school councillor, legislative requirements, provides further knowledge of planning, finance and policies and covers any further questions that you may have.

If any of our school councillors would like to attend this training session from 6.30pm to 9pm, then please let the Office know or speak to Annette for more information.



You are invited to School Councillor Training: Improving School Governance

Are you familiar with the legislative framework within which school councils operate?

The School Governance Training will:

- Discuss roles and responsibilities
- Clarify legislative requirements
- Help develop skills and knowledge to support your work in strategic planning, finance, policy development and review
- Encourage discussion to understand common issues for school councils
- Assist school councillors to support the principal in achieving the best possible outcomes for students

Who should attend?

All members of school councils are encouraged to attend Governance training

Governance training

- ❖ Confirmed Dates: Tuesday 15 March 2016
- ❖ School: Neerim South Primary School
- ❖ Address: 180 Main Neerim Road Neerim South 3831
- ❖ Time: 6.30pm registration & refreshments, 7pm – 9pm training

To secure your place, please go to our website below and book yourself in directly by Friday 3 March 2016 - <http://www.syneristiq.com/councilortraining/>

WGRSSA ATHLETICS DAY

WEST GIPPSLAND RURAL SCHOOL SPORTS

CANTEEN LIST

HOT FOOD

Hot Dog	\$2.50
Party Pies	\$1.00
Party Sausage Rolls	\$1.00
Steamed Dim Sim	\$1.00

DRINKS

Soft Drink	\$2.00
Bottle Water	\$2.00
Prima	\$1.50
Slushie	\$2.00

SNACKS

Chips	\$1.50
Mixed Lollies	\$0.50
Chupa Chup Lollipop	\$0.50
Icy Poles	\$0.50
Muffin Break Muffins	\$2.50

CANTEEN RAN BY DARNUM PRIMARY SCHOOL 2016



NILMA PRIMARY SCHOOL CALENDAR

Issue 06- 03/03/2016

MARCH 2016

Monday	Tuesday	Wednesday	Thursday	Friday	Sa	Su
7 School Nurse Visit	8 School Nurse Visit Hot Cross Bun Drive Orders & Money due in Sporting Schools	9	10 Ballarat Camp payment due	11 WGRSSA Athletics Sports Day	12	13
14 Public Holiday No School	15 Athletics Sports Back Up Day Permission forms and payment due for Melbourne Museum Excursion Sporting Schools	16	17 Ballarat Camp payment due <i>MARC Van</i>	18 Somers Camp final payment due School Banking	19	20
21 Melbourne Museum Excursion	22 Hot Cross Bun Drive delivery Japanese Exchange Program Information Session 7pm Darnum Primary School Sporting Schools	23	24 Ballarat Camp payment due Last Day Term	25 Good Friday	26	27
28	29	30	31			

APRIL 2016

Monday	Tuesday	Wednesday	Thursday	Friday	Sa	Su
				1	2	3
4	5	6	7	8	9	10
11 Start Term 2 STUDENT FREE DAY	12 Somers Camp	13 Somers Camp	14 Ballarat Camp payment due <i>MARC Van</i> Somers Camp	15 Somers Camp	16 S/C	17 S/C
18 Somers Camp	19 Somers Camp	20 Year 6/5 Ballarat Camp	21 Year 6/5 Ballarat Camp	22 Year 6/5 Ballarat Camp	23	24
25 ANZAC DAY PUBLIC HOLIDAY	26	27	28 <i>MARC Van</i>	29	30	